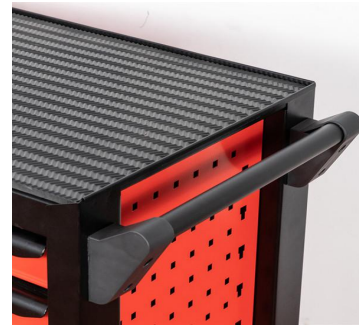




XS4XG	DIMENSIONS	SPECIFICATION
Product Size	780*460*990 mm	All high-quality cold rolled steel plate production.
Packing Size	800*490*890 mm	Thickness of cold-rolled plate: 0.8mm
4 Drawers	550*425*55 mm	Thickness of drawer: 0.7mm
N.W.:	42KGS	Surface treatment: Spraying plastics
G.W.:	47KGS	Can OEM and ODM
40" HQ	207pcs	Regular hand tools are optional.



XS642-BB	DIMENSIONS	SPECIFICATION
Product Size	770*460*880mm	All high-quality cold rolled steel plate production.
Packing Size	790*490*780mm	Thickness of cold-rolled plate: 0.8mm
4 Drawers	570*425*75mm	Thickness of drawer: 0.7mm
2 Drawers	570*425*150mm	Stainless Steel Platform
1 Side Cabinet	350*120*620mm	Surface treatment: Spraying plastics
N.W.:	42KGS	Can OEM and ODM
G.W.:	47KGS	Regular hand tools are optional.
40" HQ	207pcs	Mute PU wheel, 2 with brakes



XS752-A1	DIMENSIONS	SPECIFICATION
Product Size	680*460*960 mm	All high-quality cold rolled steel plate production.

Packing Size	700*490*860 mm	Thickness of cold-rolled plate: 0.8mm
5 Drawers	570*425*75mm	Thickness of drawer: 0.7mm
2 Drawers	570*425*150mm	Anti-skid pad on top.
N.W.:	57KGS	Surface treatment: Spraying plastics
G.W.:	62KGS	Can OEM and ODM
40" HQ	207pcs	Regular hand tools are optional.



XS752-A1B	DIMENSIONS	SPECIFICATION
Product Size	770*460*960mm	All high-quality cold rolled steel plate production.
Packing Size	790*490*860mm	Thickness of cold-rolled plate: 0.8mm
5 Drawers	570*425*75mm	Thickness of drawer: 0.7mm
2 Drawers	570*425*150mm	Plastic Platform
N.W.:	52KGS	Surface treatment: Spraying plastics
G.W.:	57KGS	Can OEM and ODM
40" HQ	207pcs	Regular hand tools are optional.



XS752-A2	DIMENSIONS	SPECIFICATION
Product Size	770*460*960mm	All high-quality cold rolled steel plate production.
Packing Size	790*490*860mm	Thickness of cold-rolled plate: 0.8mm
5 Drawers	570*425*75mm	Thickness of drawer: 0.7mm
2 Drawers	570*425*150mm	Plastic Platform
N.W.:	57KGS	Can OEM and ODM
G.W.:	62KGS	Regular hand tools are optional.
40" HQ	207pcs	Mute PU wheel, 2 with brakes



XS752-A2B	DIMENSIONS	SPECIFICATION
Product Size	770*460*955 mm	All high-quality cold rolled steel plate production.
Packing Size	790*490*860 mm	Thickness of cold-rolled plate: 0.8mm
5 Drawers	570*425*75mm	Thickness of drawer: 0.7mm
2 Drawers	570*425*150mm	Plastic Platform
1 Side Cabinet	350*120*700 mm	Surface treatment: Spraying plastics
N.W.:	52KGS	Can OEM and ODM
G.W.:	57KGS	Regular hand tools are optional.
40" HQ	207pcs	Mute PU wheel, 2 with brakes



XS752-A3B	DIMENSIONS	SPECIFICATION
Product Size	770*460*955mm	All high-quality cold rolled steel plate production.
Packing Size	790*490*860mm	Thickness of cold-rolled plate: 0.8mm
5 Drawers	570*425*75mm	Thickness of drawer: 0.7mm
2 Drawers	570*425*150mm	Plastic Platform
1 Side Cabinet	350*120*700mm	Surface treatment: Spraying plastics
N.W.:	52KGS	Can OEM and ODM
G.W.:	57KGS	Regular hand tools are optional.
40" HQ	207pcs	Mute PU wheel, 2 with brakes



XS752-BB	DIMENSIONS	SPECIFICATION
----------	------------	---------------

Product Size	770*460*955 mm	All high-quality cold rolled steel plate production.
Packing Size	790*490*860 mm	Thickness of cold-rolled plate: 0.8mm
5 Drawers	570*425*75mm	Thickness of drawer: 0.7mm
2 Drawers	570*425*150mm	Stainless Steel Platform
1 Side Cabinet	350*120*700 mm	Surface treatment: Spraying plastics
N.W.:	51 KGS	Can OEM and ODM
G.W.:	56 KGS	Regular hand tools are optional.
40" HQ	207 pcs	Mute PU wheel, 2 with brakes



XS752-BG	DIMENSIONS	SPECIFICATION
Product Size	895*460*960 mm	All high-quality cold rolled steel plate production.
Packing Size	905*490*860 mm	Thickness of cold-rolled plate: 0.8mm
5 Drawers	570*425*75mm	Thickness of drawer: 0.7mm
2 Drawers	570*425*150mm	Stainless Steel Platform
1 Side Drawer	150*400*700 mm	Surface treatment: Spraying plastics
N.W.:	60KGS	Can OEM and ODM
G.W.:	65KGS	Regular hand tools are optional.
40" HQ	183pcs	Mute PU wheel, 2 with brakes



XS761-BB	DIMENSIONS	SPECIFICATION
Product Size	770*460*880 mm	All high-quality cold rolled steel plate production.
Packing Size	790*490*780 mm	Thickness of cold-rolled plate: 0.8mm
6 Drawers	570*425*75mm	Thickness of drawer: 0.7mm
1 Drawer	570*425*150mm	Stainless Steel Platform
1 Side Cabinet	350*120*620 mm	Surface treatment: Spraying plastics
N.W.:	42KGS	Mute PU wheel, 2 with brakes
G.W.:	47KGS	Can OEM and ODM
40" HQ	207pcs	Regular hand tools are optional.




XS761-A3BK	DIMENSIONS	SPECIFICATION
Product Size	770*460*880mm	All high-quality cold rolled steel plate production.
Packing Size	790*490*780mm	Thickness of cold-rolled plate: 0.8mm
2 Drawers	520*350*70mm	2 removable tool case
4 Drawers	570*425*75mm	Thickness of drawer: 0.7mm
1 Big Drawer	570*425*150mm	Surface treatment: Spraying plastics
1 Side Cabinet	350*120*620mm	Plastic Platform
N.W.:	52KGS	Mute PU wheel, 2 with brakes
G.W.:	57KGS	Can OEM and ODM
40" HQ	207pcs	Regular hand tools are optional.



XS752-BGS	DIMENSIONS	SPECIFICATION
Product Size	895*460*960 mm	All high-quality cold rolled steel plate production.
Packing Size	905*490*860 mm	Thickness of cold-rolled plate: 0.8mm
5 Drawers	570*425*75mm	Thickness of drawer: 0.7mm
2 Drawers	570*425*150mm	Stainless Steel Platform
1 Side Drawer	150*400*700 mm	Surface treatment: Spraying plastics
N.W.:	60KGS	Can OEM and ODM
G.W.:	65KGS	Regular hand tools are optional.
40" HQ	183pcs	Mute PU wheel, 2 with brakes



XS642-BGS	DIMENSIONS	SPECIFICATION
Product Size	770*460*880 mm	All high-quality cold rolled steel plate production.

Packing Size	790*490*780 mm	Thickness of cold-rolled plate: 0.8mm
4 Drawers	570*425*75mm	Thickness of drawer: 0.7mm
2 Drawers	570*425*150mm	Stainless Steel Platform
N.W.:	45KGS	Can OEM and ODM
G.W.:	50KGS	Regular hand tools are optional.
40" HQ	207pcs	Mute PU wheel, 2 with brakes
		
<b>XS761-BGS</b>	<b>DIMENSIONS</b>	<b>SPECIFICATION</b>
Product Size	770*460*880 mm	All high-quality cold rolled steel plate production.
Packing Size	790*490*780 mm	Thickness of cold-rolled plate: 0.8mm
4 Drawers	570*425*75mm	Thickness of drawer: 0.7mm
2 Drawers	570*425*150mm	Stainless Steel Platform
N.W.:	45KGS	Can OEM and ODM
G.W.:	50KGS	Regular hand tools are optional.
40" HQ	207pcs	Mute PU wheel, 2 with brakes